

Housekeeper feature introduction

1. What changes are introduced in Housekeeper?

The original linkage function is moved to Housekeeper module, the method of how to select device from list is also changed.

2. Firmware upgrade

Upgrade will be done by gateway to use Housekeeper function. The purpose of the upgrade is to transit the data in gateway. Firstly APP will send upgrade instruction to gateway, after gateway has upgraded its firmware, it will feedback the upgrade result in APP side. Regarding the version limitation, please note the 1st generation gateway cannot support Housekeeper function.◦

3. What new features are introduced

Scene and timing trigger has been added to trigger event, not just only device trigger as in original linkage task.

Restricted condition is added, which includes 3 types: scene, device, time. When trigger event is triggered, only when restricted condition is satisfied would the task be executed. Restricted condition can be empty.

4. What has Housekeeper module resolved?

Same device can execute different task in the same rule.

Rules for scene linkage with task has been more flexible and fun.

5. Housekeeper feature detail

a) Rule list

Display the added Housekeeper rules list, provide a quick On/Off switch for those Housekeeper rules.

b) Add Rules

In the rules being added, Name, Trigger event, Execute task cannot be empty, otherwise the rule cannot be saved.

i. Name

The Name of the rule.

ii. Trigger event

Trigger event has 3 types: device, time, scene. When trigger event is triggered, it will execute the set task.

iii. Restricted condition

When restricted condition is added and when trigger event happens, only when the restricted

condition is satisfied, it would execute the set task.

Multiple condition: And/Or: Click it would switch the conditions rule relation.

And: All conditions must be satisfied simultaneously.

Or: Any one of the conditions is satisfied it will execute the task.

iv. Execute task

Select device to add and set task to be executed.

c) Delete rule

Tap on any rule and slide to the left, delete button will appear. Click it to delete the rule.

6. Housekeeper rule examples

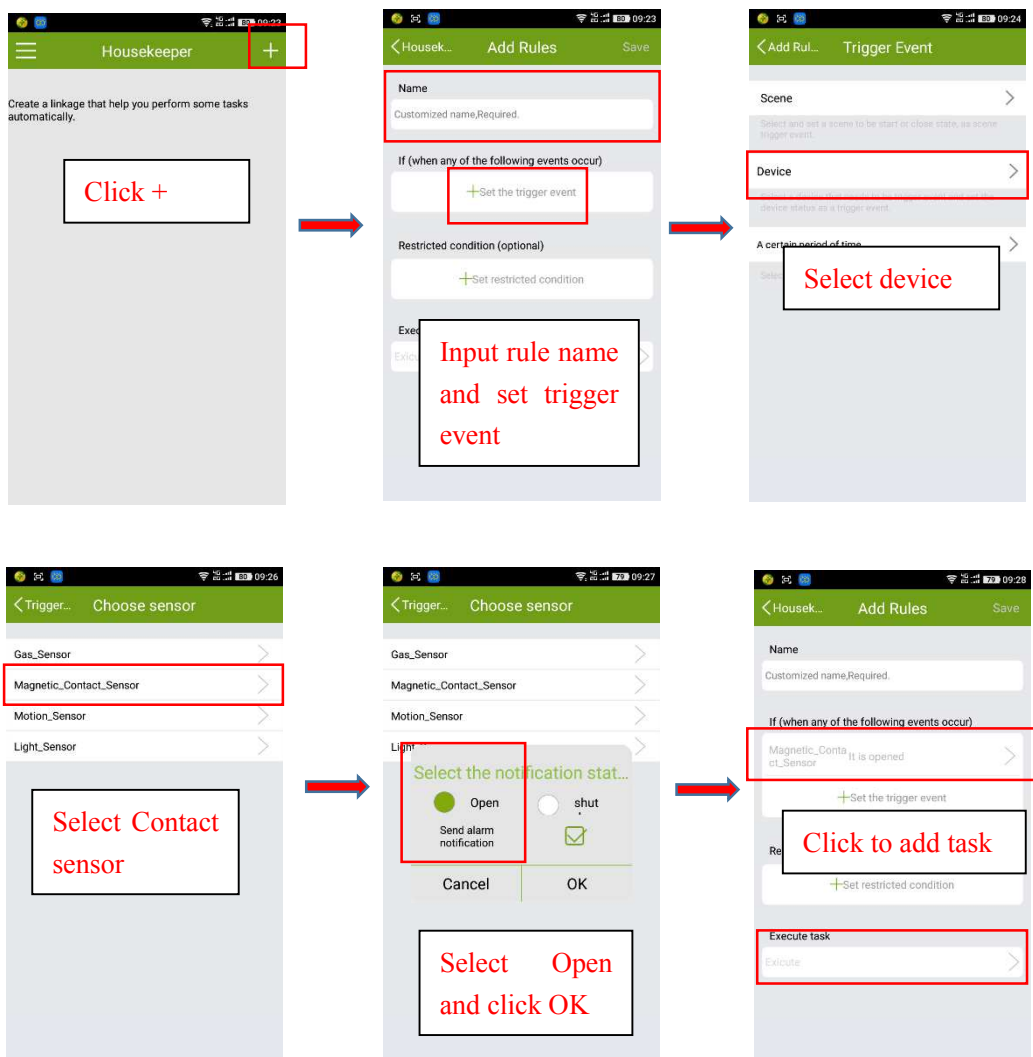
a) If magnetic contact sensor is open, siren report alarm.

Name: Fire

Trigger event: Open magnetic contact sensor

Restricted condition: Null

Execute task: Siren report alarm





b) Midnight get up, when PIR detect motion, turn on the light in corridor and the bedside lamp, after 3 minutes, turn them off automatically

Name: Midnight get up

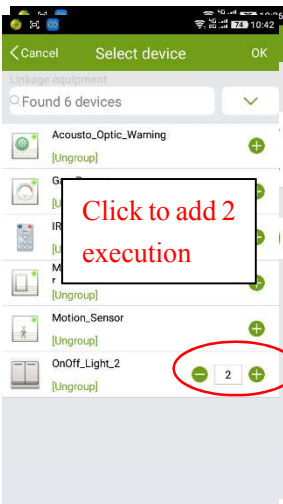
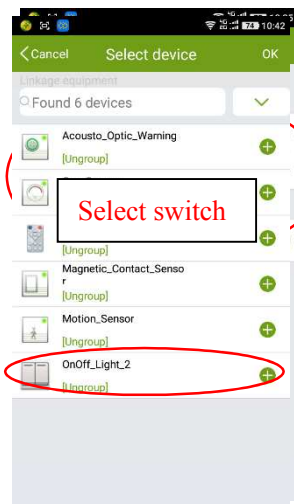
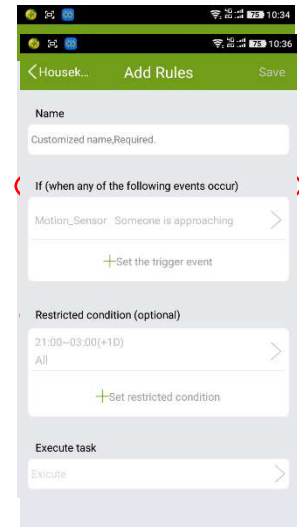
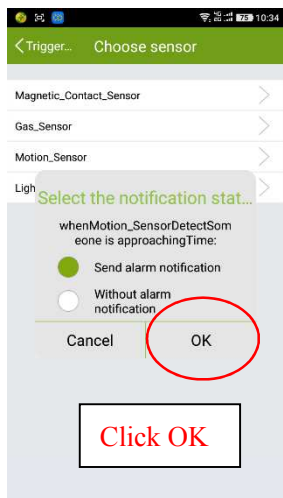
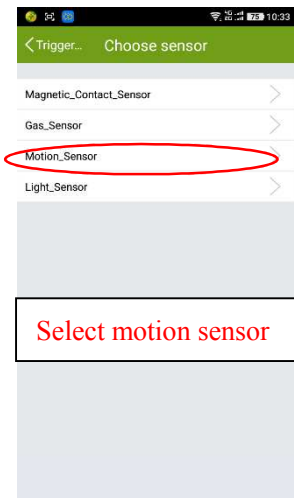
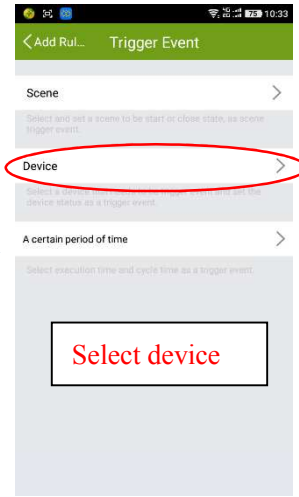
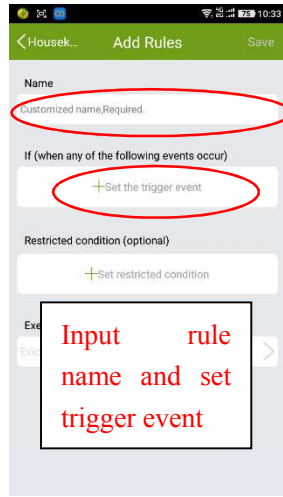
Trigger event: PIR detect motion

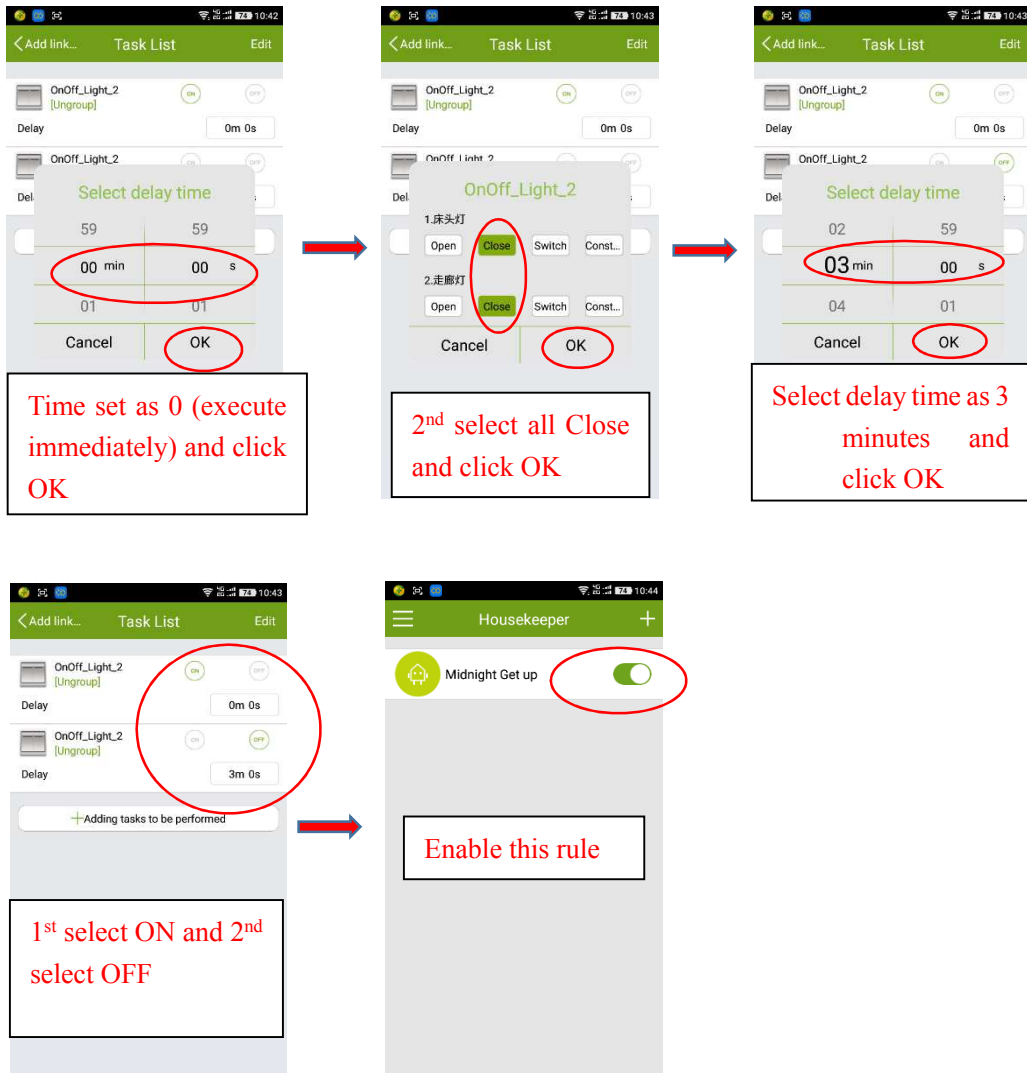
Restricted condition: 21:00~3:00 (2nd day)

Every day

Execute task: Bedside lamp and corridor light turn on

Bedside lamp and corridor light turn off after 3 minutes delay





Note: Housekeeper features are keep improving. For more examples or want to know how to implement a rule for a specific purpose, please contact Wulian support team.